

Construction of Web-based Livestock Farmer Group Information System

Hendry^{1*}, Irwan², Supiyandi³, Barany Fachri⁴, Ricky Ramadhan Harahap⁵
^{1,2,3,4,5}Universitas Pembangunan Panca Budi, Medan

Keywords: Black box Testing, Farmer Group, Unified Modeling Language (UML), Waterfall

Correspondence:
hendry@dosen.pancabudi.ac.id

Abstract: Errors between administrators and warehouses regarding stocks of fertilizers, seeds, and tools are still common, resulting in less effective accounting and information processes for farmer groups. A web-based application simplifies data processing and transmission, helping farmer groups manage and oversee the company's strategy to match it with the empowerment of farmer groups in a balanced manner. Therefore, this study aims to design a farmer group application that operates over the internet. The study resulted in a farmer group application built with admin features that can create, read, change, and delete (CRUD) stock items, member data, tool stock, and reports. However, farmers have the ability to view stock items and submit online pickups. Waterfall method, web-based design using integrated modeling language method (UML). The black box method combined with the Partitioning Test Case Equivalence technique produced successful software testing results. This application is expected to help the Farmer Group work better and increase solidarity and food quality for all farmers.

INTRODUCTION

The accelerated spread of technology has a huge impact on many things, especially the fisheries economy, particularly agriculture, where the majority of Indonesians work (H. Hermawan, 2016). As a result, Indonesia is now considered a developing country. The day-to-day processes within the agricultural sector are heavily influenced by this role. Given the amount of work that cannot be abandoned, a means is needed to facilitate data or information processing. One way to help a group or community process data and information effectively and efficiently is to use a computerised system (M. Farhan Setiawan, M. Nur Witama, and R. Hikmah, 2020). This farmer group is a collection of farmers in the Orong Tenga area who have more than 40 members who work together to meet the needs of their respective land. The activities of this group provide tools and materials provided by the government.

Based on observations where the bookkeeping and information process is still done manually, it is less effective because mistakes often occur between the management and

the warehouse. In cases such as fertiliser, seeds, and any tools, members should know how many items there are, then the caretaker should check it on the logbook or go directly to the warehouse to make sure if it exists. If it is there, the member should give it directly to the caretaker without making any changes. However, this is the reality of farmer data management: farmer groups still use books to process their data.

Researchers looked at this farmer group system that decided to change some of its data with standardised interfacing tools (such as web browser interfacing tools) to enable data exchange (H. Herfandi, M. Julkarnain, and M. Hanif, 2022). Web-based applications make data processing and distribution easier (N. Purwanti and I. D. Fatmaningtyas, 2020) due to advances in information and communication technology. This application is expected to help farmer groups manage their organisational and information strategies so that their empowerment remains balanced. This application is expected to help Farmer Groups overcome their problems and increase solidarity and food quality for all farmers.

Research conducted by S. Fitrianti, S. Pengajar Prodi, A. Agriculture, P. Agriculture, and N. Payakumbuh (2018) in this article created a management information system to support the decisions of managers, the application is able to process data and provide information needed by the manager, the lack is that the application can only be accessed with only 1 computer. The difference with the current research, where the application that is built can be accessed on mobile phones or on any computer [6]. Research from Y. P. Ariyani, H. Suryamen, and F. Akbar (2017) the results of this study create a search application or GPS about the layout of farmer groups in Agam Regency, the application that is built is very complete to display the details and name of the location of the farmer group. The shortcomings of this research are the absence of specific information about the farmer group. The difference lies in its function where the application in the current study can inform farmer groups more specifically [7]. Research conducted by J. Suganda and M. Solahudin (2017), where this study created a system which is a web-based software application that is used specifically to manage information about farmer groups. The application that was built makes agricultural services or farmer groups with young people view information, add information and edit information according to their role, the farmer group information system has not been able to become a two-way communication medium besides that the information system has also not recorded activities or assets received by farmer groups. The difference lies in who the

research is aimed at, my research is aimed at a Farmer Group (Poktan) while the research aims to manage the Farmer Group Association (Gapoktan) [8]. Research by M. F. Hidayatullah (2020) Creating an application that produces integrated financial health analysis online according to their respective levels. The application has financial reporting, each of which can be accessed by members and parents. Lack of inspection of goods so that the goods do not match the stock. The difference lies in research and applications where the application being built is concerned with the suitability of existing goods with records [9].

In this study, researchers designed an application to facilitate data processing and information delivery, the application developed contained a video menu as education. By considering some of the references above, the strength of this research is that there are more specific activity information features, can be accessed at any time and supports mobile devices and computers, and has activity information features, the complete data displayed so that researchers can develop it with several existing methods, researchers use the waterfall method which is considered very effective in designing these applications.

RESEARCH METHODOLOGY

SDLC (Software Development Life Cycle)

Software Development Life Cycle is a conceptual model used in research management to outline the steps involved in a research project. Various SDLC methods have been developed to guide system development including the waterfall model, Rapid Application Development (RAD), Joint Application Development (JAD), Fountain model and Spiral model and so on. The model that the author uses in developing information systems is the waterfall model. Figure 1 shows the classic methodology Waterfall model, which is the first SDLC method that outlines the various stages involved in system development.

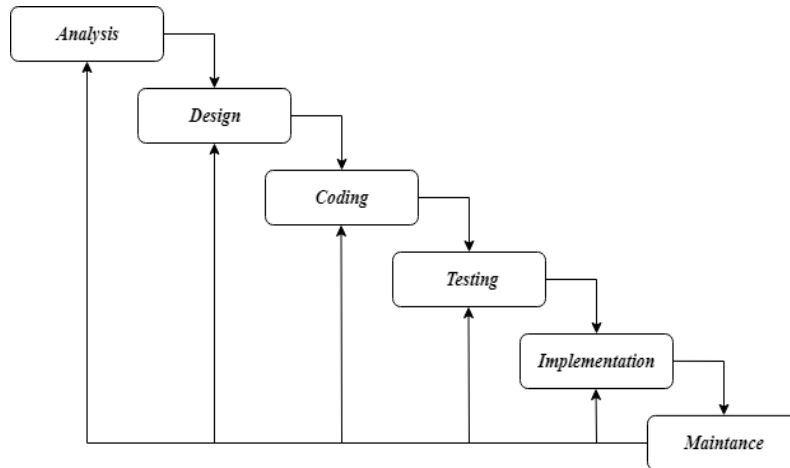


Figure 1. Metode Waterfall

Figure 1 shows the stages of the system planning process. The explanation of each of the stages is as follows:

1. Requirements definition stage where recognising the problems that exist in users is then carried out the process of the initial stages in creating a new system.
2. System and Software design At this stage, data design is carried out, interface (interface). The design created focuses on creating a software support programme design.
3. Implementation and unit testing At this stage is the implementation of the design stage which is then tested partly or per unit.
4. Integration and System Testing at this stage the process of testing the system or testing the design of the information system is carried out and then the system is tested as a whole whether it is in accordance with the expected results.
5. Operation and Maintenance at this stage the software that has been made is handed over to the user to run and maintenance is carried out by the agency.

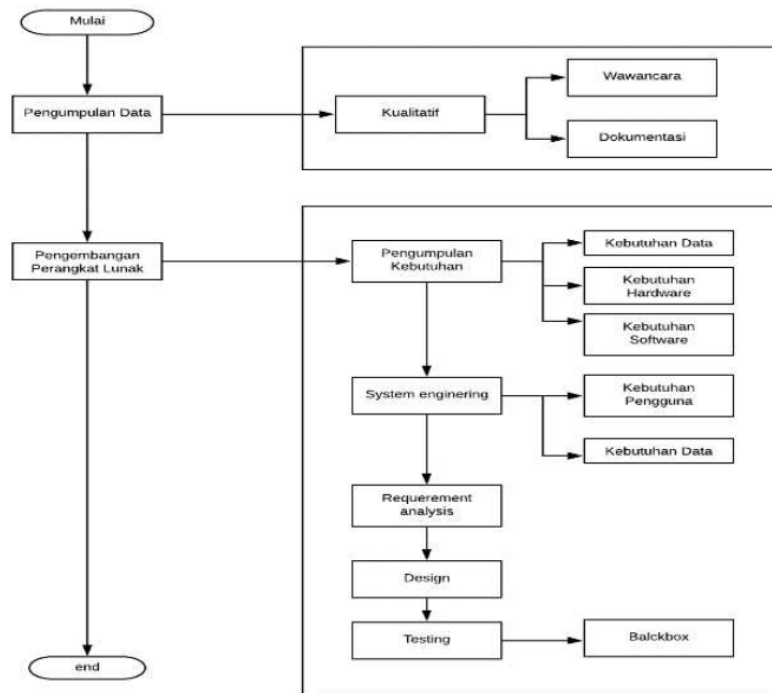


Figure 2. Kerangka Pemikiran

Figure 2 shows the stages of the system planning process. The explanation of each of the stages is as follows:

1. Identification of business processes at a stage where recognising the problems that exist in users is then carried out the process of the initial stages in creating a new system.
2. System Analysis At this stage data design is carried out, interface (interface). The design created focuses on creating a software support programme design.
3. System design At this stage is the implementation of the design stage which is then tested partly or per unit.
4. Implementation At this stage, the process of testing the system or testing the design of the information system is carried out, then the system is tested as a whole whether it is in accordance with the expected results.
5. Finalisation at this stage the software that has been made is submitted to the user to run and maintenance is carried out by the agency.

RESUL AND DISCUSSION

Login Form

In Figure 3 is the implementation of the member login display by filling in the username and password to be able to access the application which is the initial display before entering the farmer group application.

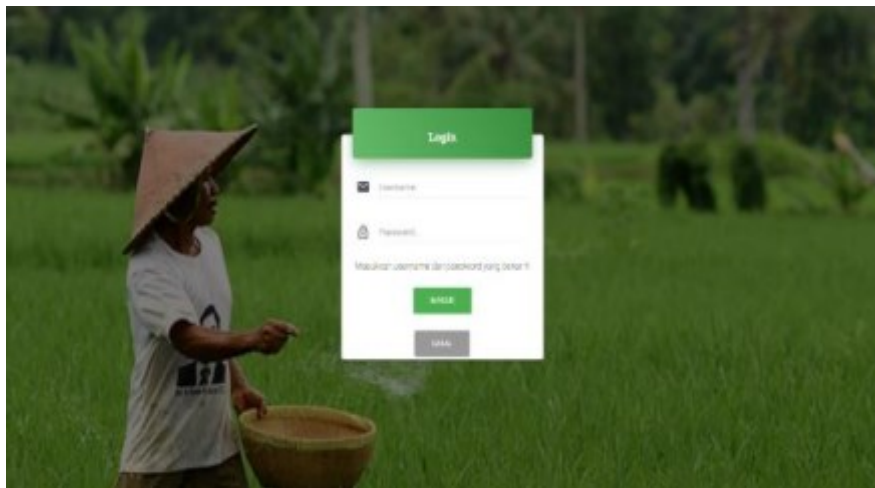
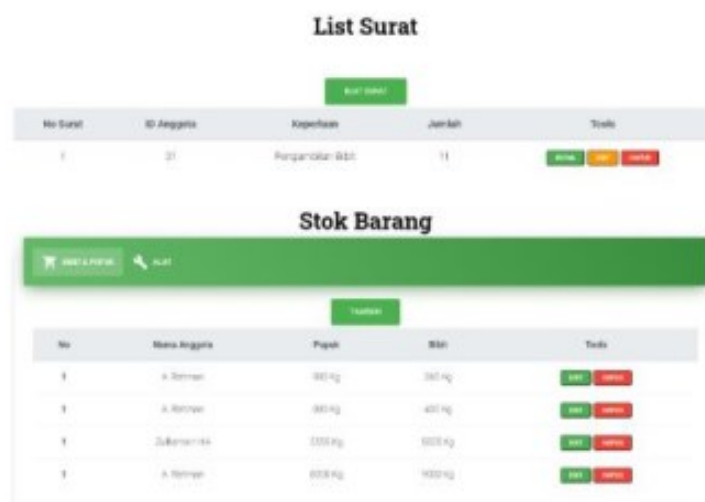


Figure 3. Login

Stock Form

In Figure 4 is the implementation of the seed and fertiliser stock view of the farmer group admin which contains seed and fertiliser data that can be edited.



The screenshot displays two tables from a web application. The top table is titled 'List Surat' and has a 'Tambah' button above it. It contains one row of data. The bottom table is titled 'Stok Barang' and has a 'Tambah' button above it. It contains four rows of data. Both tables have a 'Tindakan' column with green and red buttons.

No Surat	ID Anggota	Kebutuhan	Jumlah	Tindakan
1	31	Pengolahan Bibit	11	Tambah Edit Hapus

No	Nama Anggota	Pupuk	Bibit	Tindakan
1	A. Romya	300 kg	300 kg	Tambah Hapus
1	A. Romya	300 kg	400 kg	Tambah Hapus
1	Zubairahidi	3000 kg	3000 kg	Tambah Hapus
1	A. Romya	6000 kg	6000 kg	Tambah Hapus

Figure 4. Stok Bibit

Testing System

In testing this application using the Black Box Testing method with the Test Case Equivalence Partitioning technique. The following are the stages carried out in Black Box testing using the Test Case Equivalence Partitioning technique which can be seen in Table 1

Table 1. Black Box Testing

Test Class	Scenario	Outcome	Conclusion
Login (berhasil)	<i>Enter username and password Enter the main page</i>	<i>Enter the main page</i>	<i>Success</i>
<i>Instansi</i>	<i>Add, delete, view and edit data agency</i>	<i>Enter the agency page and can perform data CRUD</i>	<i>Success</i>
<i>Stakeholder</i>	<i>Add, delete, view and edit data Stakeholders</i>	<i>Enter the stakeholder page and can CRUD data</i>	<i>Success</i>
<i>Business Unit</i>	<i>Conduct transactions buying and selling goods and / or services</i>	<i>Enter the business unit page (livestock, general trade, water) and make a sale transaction purchase</i>	<i>Success</i>
<i>Financial Accounts</i>	<i>To see income and transaction expenses and transaction reports</i>	<i>Log in to your financial account and be able to see the income that has occurred in the business unit, and can input expenses, and view financial</i>	<i>Success</i>

		<i>statements of transaction results</i>	
<i>Manage Admin Data</i>	<i>Manage admin data if there are changes data</i>	<i>Enter the edit information page admin</i>	<i>Success</i>
<i>Logout</i>	<i>Pressing the exit</i>	<i>Exit the system</i>	<i>Success</i>

CONCLUSION

The research shows that (1) the waterfall software development method is used; (2) the Farmer Group application is built with a web-based, using the Unified Modelling Language (UML) approach; (3) the programming language used is PHP (PHP: Hypertext Preprocessor), with the codeigniter framework and MySQL database; and (4) the software testing method with the black box method is used resulting in successful conclusions from various types of tests. (5) The farmer group application built has the ability of the admin to create, read, change, and delete (CRUD) stock items, member data, tool stock, and news. On the other hand, farmer members have the ability to view stock items and submit online pickups.

REFERENCES

- H.Hermawan, “DAMPAK Pengembangan Desa Wisata Nglanggeran Terhadap Ekonomi Masyarakat Lokal,” *Jurnal Pariwisata*, vol. III, no. 2, 2016, [Online]. Available: <http://ejournal.bsi.ac.id/ejurnal/index.php/jp>
- M. Farhan Setiawan, M. Nur Witama, and R. Hikmah, “Perancangan Sistem Pengolahan Data Produksi Konveksi Berbasis Java Pada CV Nirwana Bunga Abadi,” *Jurnal Nasional Komputasi dan Teknologi Informasi*, vol. 3, no. 3, 2020.
- H. Herfandi, M. Julkarnain, and M. Hanif, “Desain Dan Implementasi Restful Web Services Untuk Integrasi Data Dan Aplikasi,” *Jurnal Informatika Teknologi dan Sains*, vol. 4, no. 1, pp. 36–41, Feb. 2022, doi:10.51401/jinteks.v4i1.1529.
- [N. Purwanti and I. D. Fatmaningtyas, “Sistem Informasi Pengolahan Data Anak dan Guru pada Yayasan Rumah Qur’an Violet Indonesia Berbasis Website,” *INFORMATICS FOR EDUCATORS AND PROFESSIONAL: Journal of Informatics*, vol. 5, no. 1, p. 53, Dec. 2020, doi: 10.51211/itbi.v5i1.1425.

- Nurzakina Sophyan, “Rancang Bangun Sistem Informasi Manajemen Pemberdayaan Kelompok Tani Pada Dinas Pertanian Kabupaten Barru,” Universitas Islam Negeri Alauddin Makassar., MAKASSAR, 2017. Accessed: May 27, 2022. [Online]. Available: <http://repositori.uinalauddin.ac.id/12765/>
- S. Fitrianti, S. Pengajar Prodi, A. Pertanian, P. Pertanian, and N. Payakumbuh, “Aplikasi Sistem Informasi Manajemen pada Usaha Peternakan (Studi Kasus: Kelompok Tani Serambi Mekah Padang Panjang) Application Management Information Systems (MIS) in dairy cattle business (Case Study: Serambi Mekah farmer groups Padang Panjang),” *Jurnal Penelitian Pertanian Terapan*, vol. 14, no. 3, pp. 181–189, 2018.
- Y. P. Ariyani, H. Suryamen, and F. Akbar, “Pencarian Kelompok Tani Menggunakan Sistem Informasi Geografis bagi Penyuluh di Kabupaten Agam,” *Jurnal Nasional Teknologi dan Sistem Informasi*, vol. 3, no. 3, pp. 334–342, Dec. 2017, doi: 10.25077/teknosi.v3i3.2017.334-342.
- J. Suganda and M. Solahudin, “Rancang Bangun Sistem Informasi Kelompok Tani pada Dinas Pertanian Kabupaten Jombang,” Bogor, 2017.
- M. F. Hidayatullah, “Rancang Bangun Aplikasi Analisis Kesehatan Keuangan Umkm Berbasis Web pada UMKM Kelompok Tani Elok Mekar Sari,” 2020.
- R. I. Borman, A. T. Priandika, and A. R. Edison, “Implementasi Metode Pengembangan Sistem Extreme Programming (XP) pada Aplikasi Investasi Peternakan,” *Jurnal Sistem dan Teknologi Informasi (Justin)*, vol. 8, no. 3, p. 272, Jul. 2020, doi: 10.26418/justin.v8i3.40273
- Meisa, T., Putra, B., Purwanto, H. L., & Dwanoko, Y. S. (2019). Rancang bangun sistem informasi geografis untuk menunjang promosi pariwisata dinas pariwisata dan kebudayaan kabupaten malang. 2, 718–725.
- Nurchahyo, W. (2012). Manajemen Perjalanan Dinas Satuan Kerja Perangkat Daerah (SKPD). 11(1), 61–70
- Nurfarida, N., Amalia, H., & Yunita, Y. (2020). Rancang Bangun Sistem Informasi Biaya Perjalanan Dinas. *Jurnal Teknik Komputer*, 6(1), 45–52. <https://doi.org/10.31294/jtk.v6i1.6708> [14]
- Jogiyanto. Analisis dan Desain Sistem Informasi. Yogyakarta: Andi, 2005.
- Rachmawati, S., Retnasari, T., & Rachmawati, S. (2018). Optimalisasi Sistem Informasi Perjalanan Dinas Dalam Meningkatkan Efisiensi Biaya Perusahaan. 1,

Proceedings The 2nd Annual Dharmawangsa International Conference:
“Digital Technology And Environmental Awareness In Promoting Sustainable Behavior
In Society 5.0”

- 241–249. [16] P. Bondan. Aplikasi Pembelajaran Ilmu Tajwid (Belajar Tajwid) Berbasis Android. Jakarta: Universitas Gunadarma, 2014..
- Vo, M. H. L., & Hoang, Q. (2020). Transformation of uml class diagram into owl ontology. *Journal of Information and Telecommunication*, 4(1). <https://doi.org/10.1080/24751839.2019.1686681>
- Putra, R.R. (2016). Perancang aplikasih berbasis komputer. *Jurnal Teknik ITS*, 7.
- C. Rizal, Supriyandi, M. Amin. “Perancangan Aplikasi Pengelolaan Keuangan Desa Melalui E-Village Budgeting,” *Bull. Comput. Sci. Res.*, vol. 3, no. 1, pp. 7–13, 2022, doi: 10.47065/bulletincsr.v3i1.181.
- Hendry, Supiyandi, C.Rizal, B.Fachri. (2023). Fitur Bot telegram berbasis mikrotik dalam monitoring perangkat jaringan. *Prosiding Nasional ESCAF (Economic, Social Science, Computer, Agriculture and Fisheries)*. 1180-1184.
- R. Ramadhan, B.Fachri. (2023). Perancangan Sistem Informasi Geografis Pada Lokasi Bimbingan Belajar Berbasis Android. *Prosiding Nasional ESCAF (Economic, Social Science, Computer, Agriculture and Fisheries)*. 1325-1332.
- B.Fachri, C.Rizal, Supiyandi, Eko Hariyanto, Rian Farta Wijaya. (2023). Penerapan Metode RAD Pada Sistem Informasi Pengelolaan Bank Sampah. *Prosiding Nasional ESCAF (Economic, Social Science, Computer, Agriculture and Fisheries)*. 1079-1086.
- Supiyandi, C.Rizal, M.Iqbal. (2023). Perancangan Website Promosi Kursus LKP Karyaprima Berbasis Web. *Prosiding Nasional ESCAF (Economic, Social Science, Computer, Agriculture and Fisheries)*. 989-995.